

2021 ANNUAL REPORT



Whistler
Community
Foundation

\$292,062

**GRANTED FROM WCF
FUNDS IN 2021**

88

**GRANTS &
SCHOLARSHIPS**

\$343,030

DONATIONS

RECEIVED IN 2021

**\$3.7+
MILLION**

**IN GRANTS GIVEN
OUT SINCE 1999**

37+

**ENDOWED
FUNDS**

41

VOLUNTEERS

\$8,116,953

**INVESTED AS
OF DEC 31,
2021**

149
DONATIONS

Cover Image

Sea to Sky Invasive Species Council team dressed in protective gear while doing field work.

WELCOME

MESSAGE FROM OUR CEO & CHAIR



On behalf of the Whistler Community Foundation (WCF), we are proud to provide highlights from 2021, as well as an update on WCF's priorities and direction for 2022.

Throughout 2021, WCF staff, committee members and board of directors continued to keep the purpose of the foundation at the forefront of all decision making: To be impactful in supporting the charities and organizations that address evolving community needs. Highlights from 2021 included 88 grants and scholarships being distributed. These grants and scholarships were awarded to charities across the areas of environment, arts & culture, social service and education.

Grants are possible because of donors, like you, who give to the causes you care about most. And we want to highlight the integral contribution that fund creators make to the community in creating a perpetual gift.

Priorities and direction for 2022 and beyond include expanding the areas of donor services and endowment fund development, community leadership, and grant making. Our goals are inherently linked to giving more money back to the community in the form of grants. To support fund development in the coming year, we intend to:

- Build stronger connections with donors to ensure sustained growth of all our funds with a focus on welcoming first-time donors and encouraging consistent contributions (e.g., monthly commitments).
- Expand our network and build stronger relationships with local professionals who can facilitate legacy gifts, security donations, and generous multi-year donations.
- Grow the 37 Funds that are currently endowed with WCF, which includes connecting with community members and prospective fund holders to help define long-term goals for granting and the fund growth that is needed to support those goals.

We recognize that our role in the community is one of leadership, and we intend to take that seriously by:

- Seeking more opportunities to partner with charities, nonprofits, and community-based businesses.
- Becoming a leading organization that nonprofits can turn to in times of change, crisis, and abundance.
- Recognizing the need for decolonizing WCF practices and allowing space for reconciliation with area First Nations.
- Working with local people at a committee level to engage the broader community in the production of Vital Signs events — and a full report.

Grant making is our reason for being, and so it's hard to distill our vision down into a few goals, but in 2022, we will work to:

- Deepen relationships with charities to help them build a more stable source of self-funding through growing current funds or encouraging new endowment funds.
- Elevate and showcase the important services charities provide through granting. Work with charities to expand on storytelling that connects the grants we offer them to the funds and WCF.
- Apply a critical and modern lens to our grant program with consideration to equity, the United Nations Sustainable Development Goals and Whistler's Vital Signs.

Community wellbeing is at the forefront of our goals for 2022 and we are excited to work together to use the power of endowment to address the vulnerabilities of our community that have been brought on by inequitable systems, the climate crisis and the pandemic.

With our whole hearts, we value our relationship with the local community and the trust that is placed with us as your philanthropic partner.

We look forward to working closely with you for years to come.

Claire Mozes, CEO

Sue Lawther, Chair

2021 PROGRAMS

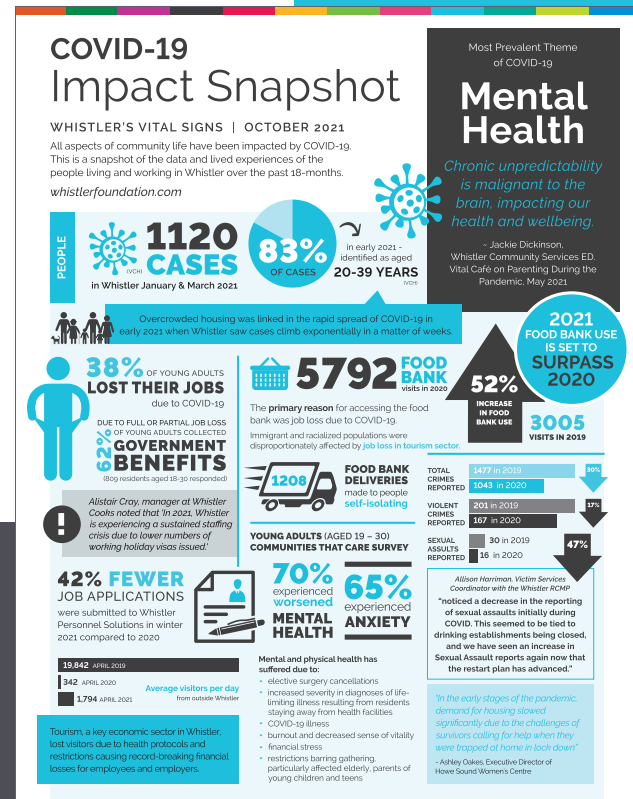
Whistler's Vital Signs

VITAL CAFES

While 2021 saw restrictions on gathering come, go and come back again, both Vital Cafes hosted by the committee were held by video conference. Similar to previous years, the world cafe style of engagement saw a panel connect people to the current issues. And breakout rooms followed to share the experiences of the folks in the small virtual room. The first cafe focused on parenting and the pressures brought on by the pandemic, while the second event held more conversations about long term planning for seniors in the community with the additional lens on problem areas that were highlighted by the pandemic for some.

COVID IMPACT REPORT

Every October, Community Foundations across Canada celebrate the importance of the Vital Signs program with a report or activity. The committee thought it was important to capture the data available to the community in one place—and the COVID-19 Impact Snapshot became the official 2021 report. As you can imagine, many things had changed since that fateful March 2020, and many things have since changed. Topics and statistics included mental health, a nearly zero percent vacancy rate for longterm rentals, an increase of risky adventuring by unskilled outdoors people, and a surprising, but still inadequate, reduction in GHG emissions.



Nonprofit Network

The Nonprofit Network is a group of representatives from local organizations in the Whistler and Pemberton areas. The concept for the open group centres on nonprofit organizations sharing similar challenges and modes of operations, though individual missions may be different. The purposes of the group are to identify opportunities for shared tools and resources, share information, provide opportunities for learning and provide an environment of mutual support. In addition to our regular meetings, the continued pressure that COVID created on the nonprofit sector inspired WCF CEO Claire Mozes and WCSS Executive Director Jackie Dickinson to team up and co-facilitate a workshop on Self Care for Nonprofit Employees. Claire and Jackie led the group through a series of exercises hoping to encourage participants to focus on their needs, to reduce and prevent feeling overwhelmed. With help of the Nonprofit Network, a list of local resources and tools was created and distributed post meeting.

Citizen of the Year

Three people were selected as finalists for 2021 Citizen of the Year: Stella Harvey, Yoann Barelli, Dr. Karin Kausky. The winner was announced through a YouTube broadcast of the Whistler Excellence Awards with a theme of Together. The theme was a nod to the work done by so many people to bring the community together during one of Whistler's greatest challenges – the pandemic.

Dr. Karin Kausky, who has worked in the community as a primary care physician for nearly 30 years, was announced as Citizen of the Year. And while Karin is known for her dedication to providing medical support to sport, more recently Karin has become better known for her commitment to community-based care through her inspirational and collaborative approach with nonprofits and government to help bring our community through a global pandemic and strengthen primary care for the longterm.

"[Karin's] honest and caring nature is backed up by thoroughness, altruism and integrity. Her merits as a pillar of this community alone are deserving of recognitions."

- A MESSAGE FROM KARIN'S NOMINATOR

Neighbourhood Small Grants (NSG)

The NSG program believes that small-scale actions and projects can have far-reaching and lasting impacts on people and places. Grants that inspire connection between neighbours are offered with ongoing awards. Community members with ideas are invited to check in with the program. In 2021, NSG saw 13 new and 3 returning applicants.

Mom and Baby Yoga in the Park was just one of the creative events that brought people together to share skills, share resources or share meaning – or in this case all of the above. A new Whistler mom came up with the concept to help 30 local moms make connections to other families with babies born near or during the pandemic.



2021 GRANT STORIES

Community

When the same kids, mostly boys, show up for the same sport, basketball, week after week, it might be time for a ReBOOT. This new intramural program was a collaboration between the Whistler Senior Secondary staff and the sport leadership team at Whistler Sports Legacies.

With a grant from Whistler Community Foundation, the team set to work on designing a new lunch-time program inside a one-day workshop. The result was a revamped Tuesday schedule that included activities like, Just Dance, yoga, badminton, volleyball, doctor dodge ball, and handball.

The program also gained momentum by including leadership students in Grades 9 through 12 in the delivery of the ReBOOT Program. There was a surge of new students to the gym at lunch time for physical activity, with girls showing interest in badminton, handball, yoga, and Just Dance.

ReBOOT is a national level program from PHE Canada that offers a toolkit to help identify problems and redesign intramural activities to include more students in physical activities that work for many different types of bodies and interests. The sport leadership team intends to pursue more creative activities to reduce shame or stigma young people might feel about their bodies during physical activity. The program is making a stop at Pemberton High School next.



Photo: Joern Rohde

Environment

As you may already know, the Fungus Among Us annual event has animated this community for nearly 20 years. Each year, a group of mycologists descends upon us from all over to roam the forest floor in search of fungi that would surprise and confuse any mushroom hunting newbies – this year's event identified 20 new species to bring the total in Whistler to 991.

In 2021, Fungus Among Us was similar to other years in that it was cold, it was raining, and the Walks with Gurus sold out in advance (8 groups with 120 attendees). New, was the introduction of Mushrooms of BC book by Andy MacKinnon and Kem Luther and the Mushroom Display going outdoors. For many years, the indoor show has seen young people and families cruising the tables ample with fungi from the bizarre and rare to the common and copious. But with COVID throwing a wrench in the plans, the show went outdoors where one could find mycologists, mycophiles and their soaking wet fans dressed in rain gear gabbing about the edibility, or the name origins, of 150 specimens collected during the walks and survey.

Back for another year was the fungi foto contest, held on Zoom, and it was an enormous hit with a record number of submissions. Let's just say, we can't wait to see what they have in store for 2022 – the 20th Anniversary of Fungus Among Us.



! Emergency

Visits to the Whistler Community Services Society (WCSS) in 2021 were unprecedented. Between January 1 and October 31, the outreach team saw 1353 new clients seeking outreach services and the total number of visits reached 4995 (up from 3829 in 2020 of the same period). More surprising is that of those visits 26% of the clients reported they were in crisis at the time of their visit, so by a rough estimation if WCSS is open 20 days per month then on average nearly 7 people a day reported being in crisis.

An award from the Jill Ackhurst Social Action Fund was supplemented by the Emergency Fund to help to take some financial burden from WCSS. And yet, this co-grant was a small portion of a larger budget to help community members through the COVID pandemic and the resulting challenges with employment, housing, and the repeated stressors of social isolation. The WCF Emergency Fund allows for grants on short notice and was developed with the intention of supporting people in times of crisis, like in the case of the Alpine fire that took several townhomes, however a pandemic also qualifies under the flexible fund.

Learning

Leadership to the benefit of community was Kathy Barnett's way of communicating just how much she loved supporting women and community. And we think Kathy would be proud to know that this year's grantee, Erin Galloway, Field Program Assistant Manager at Sea to Sky Invasive Species Council (SSISC), used the Kathy Barnett Leadership Grant to enroll in the Leadership Development Program at Athabasca University.

"[The program] has really helped build a foundation of good leadership qualities that I will continue to build on. This program really outlined the skills that effective leaders possessed and taught me how to implement them. To be able to take this course at the beginning of the Field season helped me train new staff more effectively. As a result, we had a very strong field season with really competent and knowledgeable staff."

~ ERIN GALLOWAY, SSISC

CARING COMMUNITY GRANTS

WHISTLER

Pathways Serious Mental Illness Society
Family 2 Family Education Workshops **\$1,550**

The Point Artist-Run Centre
Sunday Artist Sessions **\$3000**

**Crisis Intervention and Suicide Prevention Centre
of British Columbia**
Whistler Suicide Prevention Training Project **\$3000**

SOCIAL CARE

Zero Ceiling Society of Canada
Work 2 Live Food Security **\$3000**

Zero Ceiling Society of Canada
Zero Ceiling Decolonization **\$3000**

Whistler Community Services Society
WCSS Outreach Services **\$2,000**

The Whistler Writing Society
Scholarship for Emerging Writer who is Black,
Indigenous or person of colour **\$350**

PEMBERTON

Village of Pemberton
Pemberton Cemetery Capital Project **\$3,700**

YOUTH

Whistler 2010 Sport Legacies Society
ReBOOT Physical Education & Health Program
for Youth **\$3,000**

Whistler Arts Council
Whistler Children's Festival:
Self-Guided Cultural Scavenger Hunt **\$2,000**

The Whistler Writing Society
Authors in Schools Program **\$1,000**

EMERGENCY FUND – CRISIS INTERVENTION AWARD

Howe Sound Women's Centre
Whistler Women's Drop in and Outreach Services
\$10,000

Whistler Community Services Society
WCSS Outreach Services **\$10,000**
(in addition to **\$2,000** Social Care Grant)

ENVIRONMENTAL GRANTS



AWARE

Whistler Climate Action and Awareness Project
\$15,000

AWARE

Value of Old Forest – Education Project
\$4,000

AWARE

2021 Capacity Support (including Advocacy)
\$25,500

AWARE

Global Observation Research Initiative in
Alpine Environments **\$8,500**

Stewardship Pemberton Society

Feasting for Change **\$8,500**

Whistler Museum

Discover Nature Station **\$6,800**

Whistler Naturalists (AWARE)

Bird Studies **\$1,700**

Whistler Naturalists (AWARE)

Fungus Among Us **\$5,000**

Whistler Naturalists (AWARE)

Whistler Bio Blitz **\$15,000**

Sea to Sky Invasive Species Council

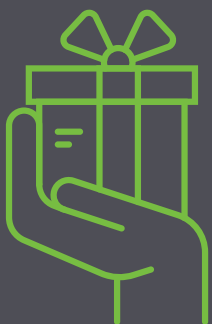
Invasive Species – Education
Outreach & Training Programs
\$18,000

Sea to Sky Invasive Species Council

Invasive Species Inventory,
Control & Monitoring
\$19,000



DONATE TO AN EXISTING FUND OR ESTABLISH A NEW ONE - THE CHOICE IS YOURS!



Helping you support the causes that you care about most is what we do best.

Make a gift to any of the specific funds listed or to the Community Fund to support the community. Should you prefer to set up a new fund, we can tailor it to the specific needs of you, your family, organization, or company.

To discover the power of your generosity visit

whistlerfoundation.com

LEARNING GRANTS

Howe Sound Women Centre Society

Human Resources Management

Certificate Program **\$4,770**

Sea to Sky Invasive Species Council

Leadership Development Program **\$2,780**

CHARITY FUNDS ANNUAL DISBURSEMENTS

Arts & Culture Legacy Fund **\$10,669**

AWARE Environmental Fund **\$292**

Whistler Adaptive Sports Endowment **\$3,407**

Whistler and Pemberton Big Brothers/Big Sisters Fund **\$291**

Whistler Animals Galore Fund **\$303**

Whistler Museum and Archives Society Fund **\$595**

Whistler Public Library Fund **\$269**

Whistler Search and Rescue Fund **\$41,748**

Zero Ceiling Society Fund **\$344**



SCHOLARSHIPS & BURSARIES

\$500	Natalie Corless	Whistler Secondary	Doug and Mary Forseth Scholarship
\$500	MacKenzie Williamson	Pemberton Secondary	Doug and Mary Forseth Scholarship
\$550	Petra Giacomelli	Whistler Community	Sarah McSeveney Scholarship & Moving Mountains for Children
\$550	Meg Halliwell	Whistler Community	Sarah McSeveney Scholarship & Moving Mountains for Children
\$550	Emma Wilkins	Whistler Community	Sarah McSeveney Scholarship & Moving Mountains for Children
\$2200	MacKenzie Williamson	Pemberton Secondary	Wendy Thompson Scholarship
\$625	Skylar Williamson	Pemberton Secondary	Grad Legacy Scholarship
\$1500	Adam Brett	Whistler Secondary	Kelty and Riley Dennehy Scholarship
\$1500	Clara Iida	Whistler Secondary	Kelty and Riley Dennehy Scholarship
\$1000	Kayla Sopp	Whistler Secondary	Kelty and Riley Dennehy Scholarship
\$500	Jordane Way	Whistler Secondary	Whistler Community Foundation Scholarship
\$500	Adrienne Seco	Whistler Secondary	Whistler Community Foundation Scholarship
\$500	Helen Kim	Whistler Secondary	Whistler Community Foundation Scholarship
\$500	Israel De Real	Whistler Secondary	Whistler Community Foundation Scholarship
\$500	Jenica Felius	Whistler Secondary	Whistler Community Foundation Scholarship
\$500	Lochlan Rhode	Whistler Secondary	Whistler Community Foundation Scholarship
\$566	Hugh St. Jacques	Whistler Secondary	Chili Thom Memorial Scholarship
\$566	Zoe Carter	Howe Sound Secondary	Chili Thom Memorial Scholarship
\$566	Levi Nelson	Lil'wat Nation	Chili Thom Memorial Scholarship
\$1000	Sierra Haziza	Whistler Secondary	Walter Zebrowski Rotary Memorial Scholarship
\$500	Adam Brett	Whistler Secondary	Walter Zebrowski Rotary Memorial Scholarship
\$500	Gavin Riley	Whistler Secondary	Walter Zebrowski Rotary Memorial Scholarship
\$1000	Elaina Zohner	Howe Sound Secondary	Wendy Thompson Bursary
\$400	Logan Sadan	Whistler Secondary	Wendy Thompson Bursary
\$400	Maya Mikkelsen	Whistler Secondary	Wendy Thompson Bursary
\$500	Kaya Shishido	Pemberton Secondary	Wendy Thompson Bursary
\$500	Maika Shishido	Pemberton Secondary	Wendy Thompson Bursary
\$500	William Dionne	Pemberton Secondary	Wendy Thompson Bursary
\$500	Rebecca Beaton	Pemberton Secondary	Wendy Thompson Bursary
\$500	Grady Wells	Pemberton Secondary	Wendy Thompson Bursary
\$500	Kira Kirchner	Pemberton Secondary	Wendy Thompson Bursary
\$500	Luvina Franken	Pemberton Secondary	Wendy Thompson Bursary
\$500	Reba Joe	Pemberton Secondary	Wendy Thompson Bursary

OUR FUNDS



Community

Each dollar that a community builder donates to the Whistler Community Foundation goes directly to a fund. The proceeds from investments in the funds below are distributed annually through our community granting program, donor advisory, and simple charity disbursements.

Donate today to help build a secure future for non-profits in our community.

Ackhurst Family Rotary Club of Whistler Fund

American Friends of Whistler Fund

Arts & Culture Legacy Fund

Community Fund

Deborah Smythe and Family Fund

Emergency Fund

Jill Ackhurst Social Action Fund

Marlene Siemens Callanish Society Endowment Fund

Mischa Arnott Fund

Moving Mountains for Children Fund

Operating Endowment Fund

Pemberton Community Fund

Pemberton Community Endowment Fund

Terry and Barb Deutscher Fund

Sea to Sky Hospice Society Fund

Whistler and Pemberton Big Brothers and Sisters Fund

Whistler Adaptive Sports Endowment Fund

Whistler Animals Galore Fund

Whistler Blackcomb Foundation Fund

Whistler Film Festival Society Fund

Whistler Museum and Archives Society Fund

Whistler Public Library Fund

Whistler Search and Rescue Fund

Whistler Youth Foundation Fund

Zero Ceiling Society Fund



Learning

Scholarship funds are distributed to Sea to Sky high school graduates to pursue further education. Leadership funds are similar but for people who volunteer or work with local charities and who wish to pursue professional development opportunities. The skills and knowledge gained will be used to give back to their charity and improve the quality of life in the Sea to Sky Corridor.

Bob and Sue Adams Leadership Fund

Chili Thom Memorial Fund

Doug and Mary Forseth Fund

Grad Legacy Scholarship Fund

Kathy Barnett Memorial Leadership Fund

Kelty and Riley Dennehy Scholarship Fund

Sarah McSeveney Scholarship Fund

Walter Zebrowski Memorial Rotary Scholarship Fund

Wendy Thompson Scholarship and Bursary Fund

Whistler Scholarship Society Fund



Environment

Environmental Legacy Fund was WCF's first, and remains the largest and fastest growing, fund. Its goal is to finance local charitable organizations whose programs and projects provide environmental benefits.

AWARE Environmental Fund

Environmental Legacy Fund

FINANCIAL STATEMENTS

The following excerpt is from our annual financial statements. Please see our website for the complete financial statements.

STATEMENT OF FINANCIAL POSITION

For the year ended December 31

	Endowment Funds	Restricted & Flow-through Funds	Unrestricted	2021	2020
Assets					
Cash		\$16,506	\$90,299	\$106,805	\$124,266
Accounts Receivable	-	-	\$779	\$779	\$2,274
Prepaid expenses	-	-	\$10,550	\$10,550	\$8,330
Investments	\$7,753,139	\$31,362	-	\$7,784,501	\$6,963,287
	\$7,753,139	\$47,868	\$101,628	\$7,902,635	\$7,098,157
Managed trust funds				\$214,318	\$197,801
Liabilities and Net Assets					
Accounts payable & accrued liabilities	-	-	\$13,311	\$13,311	\$18,142
Grants payable	\$2,500	-	-	\$2,500	\$7,647
	\$2,500	-	\$13,311	\$15,811	\$25,789
Net Assets	\$7,750,639	\$47,868	\$88,317	\$7,886,824	\$7,072,368
	\$7,753,139	\$47,868	\$101,628	\$7,902,635	\$7,098,157
Managed trust funds				\$214,318	\$197,801

STATEMENT OF OPERATIONS

For the year ended December 31

	2021	2020
Revenue		
Donations	\$343,030	\$258,406
Interest and dividends	\$143,827	\$181,745
Gain on investments	\$783,714	\$261,612
Administration fee	\$3,026	\$2,691
	\$1,273,597	\$704,454
Expenses		
Grants	\$292,062	\$328,970
Administration	\$167,079	\$181,417
	\$459,141	\$510,387
Surplus of revenue over expenses for the year	\$814,456	\$194,067

THANK YOU

To our donors of 2021, thank you. Your gifts support long-term needs and opportunities and invest in solutions that strengthen our community now and in the future. You gave to the causes and charities you care about, knowing that the Whistler Community Foundation's expertise and community connections will ensure your gift has the most meaningful impact. We truly appreciate your support and commitment to making a lasting difference.

SUPPORTERS AND PARTNERS



COMMUNITY
FOUNDATIONS
OF CANADA



Canada

RACE & COMPANY LLP
LAWYERS

vancoouver
foundation

WCS engagement
+ planning



whistler public
LIBRARY



Thank you to the many volunteers of the Standing Committees, whose contributions of local knowledge and expertise strengthen the Whistler Community Foundation's work. Please reach out, if you are interested in joining any of our committees.

STANDING VOLUNTEER COMMITTEES

Citizen of the Year Selection

Environmental Legacy Grants

Emergency Fund Advisory

Governance

Finance and Investment

Fund Development

Pemberton Community Grants

Scholarships & Bursaries

Whistler Community Grants - Youth,
Social Care and Leadership

Vital Signs

BOARD OF DIRECTORS

Sue Lawther, Chair

Scott Pass, Vice Chair

Greg Newton, Treasurer

Debbie Smythe, Director

Sharon Broatch, Director

Carolyn Crompton, Director

Donna Savage, Director

Paul Dorland, Director

Tom Nepomuceno, Director

WHAT'S NEXT

In addition to our foundation purposes of fund development and granting, the focus of WCF will be on creating an informative, engaging Vital Signs report to be distributed in early 2023. Beyond the report, we plan to continue Vital Conversations with community members, elected officials, funders, and program providers to increase access to indicators of community health and support decision making.

Collaboration with all areas of community will lead us to longterm and sustainable improvements in areas of concern identified by Vital Signs under the guidance of the Sustainable Development Goals. We welcome people interested in getting involved in WCF's efforts to get in touch.



GET INVOLVED

We welcome everyone to join our events, granting, programming and more. Simply sign up for our newsletter at whistlerfoundation.com for invites, stories, and updates.

If you have philanthropic goals, such as building a fund, reach out to us. We offer flexible option for fund development suited to the level of participation you wish to have in creating a positive impact in the community. We can help you identify a particular area of interest that supports a personal or family legacy.

whistlerfoundation.com

In 2001, Skwxwú7mesh Úxwumixw (Squamish people) and Líl'wat7úl (Lil'wat people) signed a protocol agreement as a commitment to support the preservation and protection of Indigenous rights in their shared traditional lands. The two nations, who have occupied the lands and waters in and around the area known as Whistler since time immemorial, now share a space for storytelling at Squamish Lil'wat Cultural Centre.

If you have yet to learn about the unceded territories, history and languages of Squamish and Lil'wat people, we encourage you to visit and support Squamish Lil'wat Cultural Centre. More info can be found at slcc.ca.

PO Box 1184, Whistler, BC V0N 1B0
info@whistlerfoundation.com

Registered Charity No. 871748943 RR0001

whistlerfoundation.com



Whistler
Community
Foundation