



Two BioBlitz participants in a natural setting examining a field sample captured in a glass tube. Photo by Joern Rohde.



Annual Report

2022

\$407,365
GRANTED FROM WCF
FUNDS IN 2022

26
GRANTEE
ORGANIZATIONS
SUPPORTED

47
FUNDS

\$4.19+
MILLION
GRANTED
SINCE 1999

\$250,986
DONATIONS
RECEIVED IN 2022

\$7,038,370
INVESTED
AS OF DEC 31, 2022

48
VOLUNTEERS

110
GRANTS &
SCHOLARSHIPS

107
DONATIONS

Message from CEO



Community Foundations are charities that exist to provide support at a local level. Whistler Community Foundation (WCF) is one of 200 across Canada and we are proud to be part of a growing network designed to build financial stability for the nonprofit sector and grant to organizations making an impact. We bring together the financial resources of individuals, families, businesses, and organizations to create endowment funds.

In 2022, we welcomed the Lennox McNeely & Mei Liu Fund and the Literary Arts Legacy Fund. Each new fund brings the longview into focus. When considering an average 8% return over the last 20 years, we know that with new funds we can be certain to support community non-profits and their missions through annual granting.

VITAL SIGNS

We see this annual report as an opportunity to share our learnings and successes in 2022 and give an update on our plans for 2023. When I think back to 2022, what stands out most is working with the Vital Signs team on a full report. Vital Signs reports, large and small, are a snapshot of data in time and this report aimed to answer the questions:

Who lives in our village of 100?
Do we have a sustainable future?
Is our community livable?
Is everyone thriving?

In the report, we gave deep consideration to the question, 'Is everyone thriving?' As it turned out, it was one of the most difficult sections for this committee because the hard answer to the question is no, not everyone is thriving. Whistler faces a complex reality, and with respect we press you to learn more in Whistler's Vital Signs – A Community Check Up. And wholeheartedly encourage you to take action on the things you find inspiring, shocking or corroborates your experience living in Whistler.

COMMUNITY BUILDING THROUGH CONNECTION

Our focus for the upcoming year continues to be our reason for being—to support local organizations through grants so that they can do the important work in making Whistler a better place for people and planet. We are using the data from Vital Signs to point us in the direction that our community needs us to go. And to help define where support is needed. We know there is urgency in areas such as mental health, housing, and climate action.

As a funder, we are in a unique position to understand the most pressing community needs. And when presented with the opportunity, we can swiftly connect donors to funds that will support those needs. To learn more, you are invited to read stories from this report, visit our website or reach out anytime to have a conversation.

WCF staff would like to thank the board members, committee members, donors, and event participants for sharing our vision to be impactful in supporting the charities and organizations that address evolving community needs.

Claire Mozes, CEO

Whistler's Vital Signs

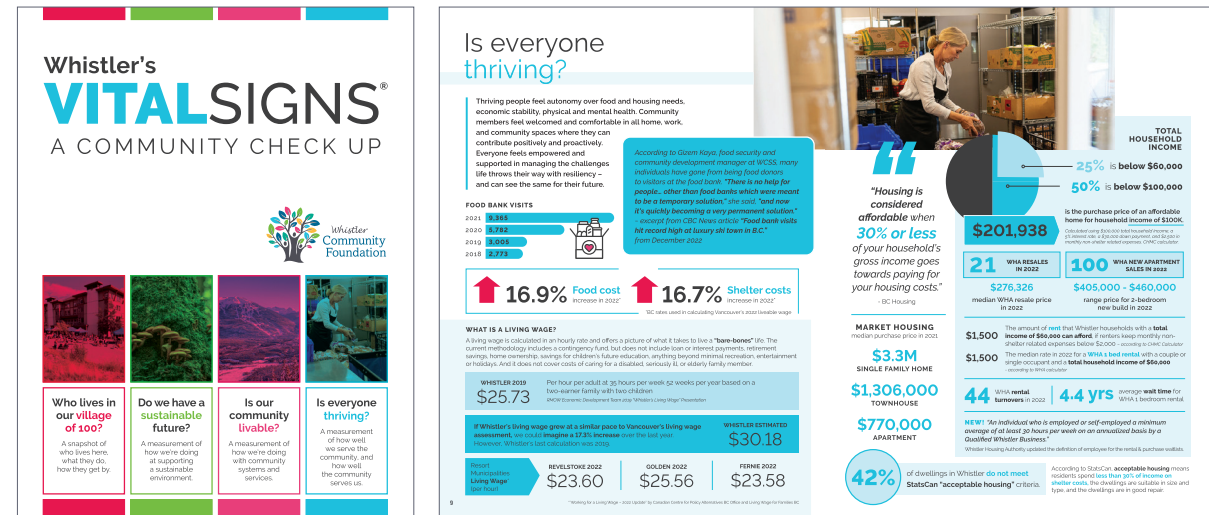
In 2022, the Whistler's Vital Signs committee looked to examine common narratives in Whistler. For example, we asked just how prevalent COVID-19 benefit seekers were in Whistler. StatsCan's report showed that in 2020, a mere 7.9% of Whistler's total income reported was COVID-19 Government income supports and benefits. That means for every \$50,000 earned in 2020, Whistler's tax payers claimed \$3,950 in COVID-19 Government income supports. With a little math, we might guess that Whistler's tax payers worked through most of the pandemic.

Our committee also focused intently on wages and housing, because many of us shared personal, family, client coworker or friend-based stories that were so shocking that we could barely comprehend in a place of obvious abundance. The truth is that even when you can find housing with the lowest available price tags, it can still be unaffordable for most of Whistler's permanent population.

From these conversations and data that we collected, we created Whistler's Vital Signs – A Community Check Up. It's a full report and we want to know about the stats that stood out for you. Visit whistlerfoundation.com/vital-signs to read the report and complete our survey.

“It was a strong commitment by those involved to be focused on not being right but rather coming together to do the right thing.”

- EXCERPT FROM VITAL SIGNS BY JACKIE DICKINSON, EXECUTIVE DIRECTOR, WHISTLER COMMUNITY SERVICES SOCIETY.



Nonprofit Network

At the Nonprofit Network, we look to support one another through idea generation, shared resources, and communication tools, like the nonprofit newsletter. When working with a network of national level charities at the Community Foundations of Canada, WCF staff are given the opportunity to see that Whistler and Pemberton are unique communities with an enormous fondness for grassroots organizing. Staff and volunteers in the network are strong with motivation and heart for the people and places they serve. That's something we admire about the nonprofit network.

Neighbourhood Small Grants (NSG)

In 2022, Neighbourhood Small Grants brought more people together than ever before—with \$7,500 in grants distributed to 17 projects. One of the most interesting ideas our grants committee has seen was the Halloween Costume Maker Jam.

Project leader, Andrea, hosted 60 folks of all ages over 2 days of costume making. With the help of a \$500 NSG, Andrea brought materials and snacks—and the makers brought creativity.

“My favourite part was seeing the kids trusted to make what they wanted, the way they wanted – designing and adapting the materials. It may not have always been the most traditional or ‘best’ way, but it was the best for them, their vision, their learning, and their ownership of the process. I loved it.”

- ANDREA

It was reported that costumes included vending machines, witches, zombie bananas, tombstones, dark angels, good angels, anime characters, and so much more.

Projects, like this Halloween Costume Maker Jam, go a long way in supporting positive emotional and physical connections by reducing financial barriers to participation in crafting, creating a safe space for people of all ages and backgrounds, using tools and equipment for creativity and developing fine motor skills.



A young person is cutting materials at the Halloween Costume Maker Jam, there are other costume makers in the background.

Citizen of the Year

Whistler Excellence Awards held their annual event in person this year and celebrated “The Art of Business”. And because the selection committee's mandate is to award the Citizen of the Year to someone who contributes to significant volunteer time to Whistler's community, you might say that 2022's Citizen of the Year knows at thing or two about the art of volunteering.

People know Stella Harvey as the person who started the Whistler Writers Festival at home in the livingroom. And while she is known to help out around the community in other ways, the writers festival's growth is a result of Stella's dedication to volunteering in the literary arts space. The first festival was an idea that has since given birth to many more. Whistler Writing Society, the charity, now offers scholarships, Authors in Schools programming, Whistler Writer In Residence workshops, a Literary Arts Legacy Fund and more. Plus there's a festival that made it through the pandemic in good form and showcased a robust line up of storytellers of all genres in 2022.



Stella Harvey, 2022 Whistler Citizen of the Year, is pictured holding an award in the centre. Stella is surrounded by Keith Reynolds, 2019 Whistler Citizen of the Year (pictured left) and Claire Mozes, CEO of Whistler Community Foundation (pictured right).



A Culturally Modified Tree on a Pemberton trail on the unceded lands of Lílwat7úl



Community

Trails built by First Nations Communities have been integral to cultural activities, foraging, crafting, hunting, trading, migration and perhaps much more in times out of mind. Today, you see trails with numerous other uses in mind, like mountain biking, hiking, or horseback for recreation. In Pemberton, the area trails have been most recently directed by Pemberton Valley Trails Association (PVTa) on unceded lands of Lílwat7úl.

In 2022, the PVTa applied for a Caring Community grant to start the process of re-capturing Indigenous history in the trail names and interpretive signage. In collaboration with Lílwat7úl and PORCA, PVTa is looking to address the lack of representation of the nation around the valley. PVTa is hopeful about building relationships and educating trail users on the significance of Culturally Modified Trees which dot the lands throughout the network, as well as protecting sacred sites like the Lílwat “Birthing Rock”.

Other aspects of this work have and will include route modifications to ensure culturally significant locations remain intact or are restored, and use of Ucwalmícwts on the signage in effort to preserve and increase the usage of the language used in the area. Lílwat7úl have established protocols for assigning historical status or names. This respect for Heritage Policy is critical to decolonizing the trail network, and so the project timeline and people adjust as needed to ensure each trail name or story meets approval of standards and cultural accuracy.

Environment

If you’ve read as much as a blog about climate anxiety, you’d know that climate action is a good, but not a cure-all prescription, for reducing the emotional paralysis that one might have about the future. With fires raging in Alberta, heat domes and polar vortexes increasing, and localized flip flops between drought and floods, we can only guess that climate anxiety will grow without serious, sustained global and local collective action.

Enter stage right, Stewardship Pemberton, an organization that has been taking action on environmental concerns for quite some time with an innovative mindset for solution- and community-based programming. In 2022, this team applied for an Environmental Legacy Fund grant that would help support the hiring of a Community Climate Action Coordinator.

In terms of filling that role, Stewardship Pemberton was heartened by the number of people qualified in the climate action arena, which made them able to focus on finding a hire that could step into the role with limited support to hit the ground running on community engagement. They are a charity of course, and training someone up or building connections when you have limited resources is a challenge.

Executive Director, Sierra Ashton, noted that this year the organization is focused on a strategic plan that is easy to communicate and looks to steer the ship. And part of that plan includes diving into the information gleaned from the Community Climate Action Coordinator’s expertise and the engagement completed over the last year.

At press time, Stewardship Pemberton was designing nature-focused initiatives to shift mindsets, build resilient systems, and strengthen connections in community to reduce climate anxiety and move toward action. In addition to their commitment to local, they’ve recognized that below the proverbial waterline lurks issues needing more significant climate action than one small, yet mighty, organization can take on. We highly recommend stopping by the Stewardship Pemberton Nature Centre in Summer 2023 to visit the caring and approachable crew who are excited to show you the ropes on environmental stewardship – the word is that they will be there Wednesdays.



Project NOW participant organizes items at a clothing swap.

Learning

When you work in a field where Indigenous people are unjustly over-represented as a direct result of systemic oppression, and you are a settler, you recognize it’s critical that you do the work to understand the impacts of colonialism on Indigenous Peoples. But if you are like grantee Bridgit Muldoon of Zero Ceiling, you take the San’yas Anti-racism Indigenous Cultural Safety Training Program with great seriousness and push yourself to go beyond understanding and question the colonial systems of the past, present and future.

“I believe that we need to learn from the past so that we can move together into the future and by taking this cultural safety training I hope that it will give me a greater understanding and will help me provide safe and equitable services to Indigenous People that will take into account the historical impacts that affect the health and wellbeing of the individual,” wrote Bridgit in the application.

Moving ourselves to the just and equitable side of history, means that we, as settlers, need to recognize our privilege and build the skills to tear down barriers that colonization has built for all of us. Decolonization is complex – with 94 calls to action from the Truth and Reconciliation Commission of Canada (TRC) needing all citizens to join in moving the dial more quickly.

The grants committee is grateful that Bridgit, in the post-program report, shared her inner most experiences: “... to be honest - I have seen changes in myself and the way that I am seeing and participating in the world and how I communicate with others in our community.” Bridgit also elaborated on how she will participate in the future: “To hold space for others and to question my own ways of being. For me, an indicator of success, is also about taking action and holding not only myself, but others responsible vs being passive and not speaking up.”



Caring Community Grants

WHISTLER

The Point Artist-Run Centre
Sunday Artist Sessions and Artist Mentorship Project
\$2,950

Howe Sound Women's Centre Society
Healing Through Arts **\$3,350**

Whistler Community Services Society
Counselling Assistance **\$3,500**

Zero Ceiling Society of Canada
Core Capacity **\$10,000**

Whistler Community Services Society
Food Bank **\$28,070**

SOCIAL CARE

Sea to Sky Hospice Society
Grief and Bereavement Packages **\$2,500**

Skwxwú7mesh Lílwat7úl Cultural Centre
Decolonizing Recruitment Process **\$3,500**

Whistler Writing Society
Whistler Writer in Residence/Festival IBPoC
Scholarship **\$750**

Zero Ceiling Society of Canada
Computers and Software **\$2,450**

PEMBERTON

Pemberton Valley Trails Association
Pemberton Trail Network Cultural Signage Project
\$3,319

CHILDREN & YOUTH

The Point Artist-Run Centre
Youth Creative Camps and Drop-in Support Project
\$2,000

The Whistler Writing Society
Authors in Schools **\$1,500**

Whistler Adaptive Sports Program
Core Capacity **\$6,000**

Howe Sound Women's Centre
Whistler Girl's Camp **\$8,500**

Whistler Children's Centre
Playground Equipment **\$500**

Indigenous Life Sport Academy (Zero Ceiling)
Capacity Building **\$310**

Environmental Grants

AWARE
Core Capacity/Advocacy/Program
Development Support **\$18,000**

AWARE
Project NOW **\$8,000**

AWARE
Zero Waste Initiatives **\$9,000**

Sea to Sky Invasive Species Council
2022 Invasive Species Education, Outreach
and Training **\$19,500**

Sea to Sky Invasive Species Council
2022 Invasive Species Inventory Control &
Monitoring **\$20,000**

Stewardship Pemberton Society
Community Climate Change Action Coordinator
\$13,500

Stewardship Pemberton Society
Feasting for Change **\$12,500**

Whistler Museum & Archives Society
Discover Nature Education Program at Lost
Lake Park **\$5,000**

Whistler Naturalists (AWARE)
Bird Studies **\$2,000**

Whistler Naturalists (AWARE)
Fungus Among Us **\$5,400**

Whistler Naturalists (AWARE)
Whistler BioBlitz **\$15,000**

Ready to make a lasting impact **at a local level?**



Whistler is a place of passion. And we believe that's the reason many charities began with grassroots organizing. On any given day, you can count on seeing someone you know at one of Whistler's charities – that's part of why we always encourage you to give right here in your community.

**Donate to existing funds or establish a new one
– the choice is yours at**

whistlerfoundation.com/give

“I am honoured to be one of the recipients of the Whistler Scholarships this year. It has been a blessing to grow up in such a supportive and inclusive community”

- NATHAN LEE

Learning Grants

Whistler Arts Council
Fundraising Associate Certificate Program **\$3,500**

Pemberton Valley Trails Association
Working Effectively with Indigenous Peoples Training **\$3,307.50**

Whistler Arts Council
Cultural Policy in Canada **\$375**

Zero Ceiling Society of Canada
San'yas Anti-racism Indigenous Cultural Safety Training Program **\$300**

Charity Funds Annual Disbursements

- Ackhurst Family Rotary Club of Whistler Fund **\$1,200**
- Arts & Culture Legacy Fund **\$11,270**
- AWARE Environmental Fund **\$320**
- Marlene Siemens Callanish Society Endowment Fund **\$490**
- Sea to Sky Hospice Society Fund **\$400**
- Whistler Adaptive Sports Endowment **\$3,640**
- Whistler and Pemberton Big Brothers/Big Sisters Fund **\$310**
- Whistler Animals Galore Fund **\$330**
- Whistler Film Festival Society Fund **\$720**
- Whistler Museum and Archives Society Fund **\$650**
- Whistler Public Library Fund **\$290**
- Whistler Search and Rescue Fund **\$44,790**
- Zero Ceiling Society Fund **\$370**



SCHOLARSHIPS & BURSARIES 2022

\$500	Jodh Ghuman	Howe Sound Secondary School	Doug & Mary Forseth Scholarship
\$500	Emily Sergent	Howe Sound Secondary School	Doug & Mary Forseth Scholarship
\$500	Abbey Mellor	Whistler Secondary School	Doug & Mary Forseth Scholarship
\$500	Brooke Romano	Whistler Secondary School	Doug & Mary Forseth Scholarship
\$730	Corinne Haasen	Whistler Secondary School	Sarah McSeveney Scholarship
\$1,200	Kaida Fieldhouse	Howe Sound Secondary School	Wendy Thompson
\$1,200	Cove Beavan	Whistler Secondary School	Wendy Thompson
\$1,200	Hugo Steiner	Whistler Secondary School	Wendy Thompson
\$1,200	Jasmine Duncan	Whistler Secondary School	Wendy Thompson
\$625	Dilnoor Gadh	Howe Sound Secondary School	Grad Legacy Scholarship
\$1,600	Ashely Knapton	Whistler Secondary School	Kelty and Riley Dennehy Scholarship
\$1,600	Charlie McCullough	Whistler Secondary School	Kelty and Riley Dennehy Scholarship
\$1,600	Adam Turkington	Whistler Secondary School	Kelty and Riley Dennehy Scholarship
\$675	Ashely Knapton	Whistler Secondary School	Whistler Community Foundation Scholarship
\$675	Kacey Cox	Whistler Secondary School	Whistler Community Foundation Scholarship
\$675	Makaila Machilek	Whistler Secondary School	Whistler Community Foundation Scholarship
\$675	Nathan Lee	Whistler Secondary School	Whistler Community Foundation Scholarship
\$675	Sacchi Train	Whistler Secondary School	Whistler Community Foundation Scholarship
\$500	Jordana Abraham	Arts Whistler	Chili Thom Memorial Scholarship
\$500	Tiago Pereda	Pemberton Secondary School	Chili Thom Memorial Scholarship
\$500	Takaya Maynard	Whistler Secondary School	Chili Thom Memorial Scholarship
\$500	Coral Humphrey	Howe Sound Secondary School	Chili Thom Memorial Scholarship
\$1,185	Emily Stalker	Whistler Secondary School	Walter Zebrowski Rotary Memorial Scholarship
\$1,185	Jack L'Estrange	Whistler Secondary School	Walter Zebrowski Rotary Memorial Scholarship
\$500	Takaya Maynard	Whistler Secondary School	Wendy Thompson Bursary
\$500	Mardi Williamson	Whistler Secondary School	Wendy Thompson Bursary
\$500	Ashley Rain Prescott	Pemberton Secondary School	Wendy Thompson Bursary
\$500	Ella Noort	Pemberton Secondary School	Wendy Thompson Bursary
\$500	Zahra Dimma	Pemberton Secondary School	Wendy Thompson Bursary
\$500	Molly Barton	Pemberton Secondary School	Wendy Thompson Bursary
\$500	Anna Zhou	Howe Sound Secondary School	Wendy Thompson Bursary



Community

Each dollar that a community builder gives to the Whistler Community Foundation goes directly to a fund. The proceeds from investments in the funds below are distributed annually through our community granting program, donor advisory, or simple charity disbursements.

Donate today to help build a secure future for non-profits in our community.

Ackhurst Family Rotary Club of Whistler Fund	Pemberton Community Fund
American Friends of Whistler Fund	Pemberton Community Endowment Fund
Arts & Culture Legacy Fund	Terry and Barb Deutscher Fund
Community Fund	Sea to Sky Hospice Society Fund
Deborah Smythe and Family Fund	Whistler and Pemberton Big Brothers and Sisters Fund
Emergency Fund	Whistler Adaptive Sports Endowment Fund
Jill Ackhurst Social Action Fund	Whistler Animals Galore Fund
Lennox McNeely & Mei Liu Fund	Whistler Blackcomb Foundation Fund
Literary Arts Legacy Fund	Whistler Film Festival Society Fund
Marlene Siemens Callanish Society Endowment Fund	Whistler Public Library Fund
Mischa Arnott Fund	Whistler Search and Rescue Fund
Moving Mountains for Children Fund	Whistler Youth Foundation Fund
Operating Endowment Fund	Zero Ceiling Society Fund



Learning

Scholarship funds are distributed to Sea to Sky high school graduates to pursue further education. Leadership funds are similar but for people who volunteer or work with local charities and who wish to pursue professional development opportunities. The skills and knowledge gained will be used to give back to their charity and improve the quality of life in the Sea to Sky Corridor.

Bob and Sue Adams Leadership Fund
Chili Thom Memorial Fund
Doug and Mary Forseth Fund
Grad Legacy Scholarship Fund
Kathy Barnett Memorial Leadership Fund
Kelty and Riley Dennehy Scholarship Fund
Sarah McSeveney Scholarship Fund
Walter Zebrowski Memorial Rotary Scholarship Fund
Wendy Thompson Scholarship and Bursary Fund
Whistler Scholarship Society Fund



Environment

Environmental Legacy Fund (ELF) was WCF's first fund and in 2023, we will celebrate 20 years of granting from the ELF. To this day, the ELF is the largest and fastest growing fund. Its purpose is to finance local charitable organizations whose programs and projects provide environmental benefits.

AWARE Environmental Fund
Environmental Legacy Fund

Financial Statements

The following excerpt is from our annual financial statements. Please see our website for the complete financial statements.

STATEMENT OF FINANCIAL POSITION

For the year ended December 31, 2022

	Endowment Funds	Restricted & Flow-through Funds	Unrestricted	2022	2021
Assets					
Cash	\$237,985	-	\$108,756	\$346,741	\$106,805
Accounts Receivable	-	-	\$420	\$420	\$779
Prepaid expenses	-	-	\$11,928	\$11,928	\$10,550
Investments	\$6,372,401	\$122,726	-	\$6,495,127	\$7,784,501
	\$6,610,386	\$122,726	\$121,104	\$6,854,216	\$7,902,635
Managed trust funds				\$184,154	\$214,318
Liabilities and Net Assets					
Accounts payable & accrued liabilities	-	-	\$14,271	\$14,271	\$13,311
Grants payable	\$74,400	-	-	\$74,400	\$2,500
	\$74,400	-	\$14,271	\$88,671	\$15,811
Net Assets				\$6,765,545	\$7,886,824
	\$6,610,386	\$122,726	\$121,104	\$6,854,216	\$7,902,635
Managed trust funds				\$184,154	\$214,318

STATEMENT OF OPERATIONS

For the year ended December 31, 2022

	2022	2021
Revenue		
Donations	\$250,986	\$343,030
Interest and dividends	\$173,937	\$143,827
Realized gains on investments	\$146,130	\$201,278
Unrealized (losses) gains on investments	(\$1,088,032)	\$582,436
Administration fee	\$4,316	\$3,026
	(\$512,663)	\$1,273,597
Expenses		
Grants	\$407,365	\$292,062
Administration	\$198,279	\$167,079
	\$605,644	\$459,141
Surplus of revenue over expenses for the year	(\$1,118,307)	\$814,456

Thank You

To our donors, supporters, and partners of 2022, we send gratitude for your continued investment in a future ripe with solutions that build our community's future and create resiliency in the face of complex community issues.

SUPPORTERS AND PARTNERS



STANDING VOLUNTEER COMMITTEES

Thank you to the many volunteers of the Standing Committees, whose contributions of local knowledge and expertise strengthen the Whistler Community Foundation's work. Please reach out if you are interested in joining any of our committees.

Citizen of the Year Selection
Environmental Legacy Grants
Emergency Fund Advisory
Governance
Finance and Investment
Pemberton Community Grants
Scholarships & Bursaries
Whistler Community Grants - Youth, Social Care and Leadership
Vital Signs

BOARD OF DIRECTORS

Sue Lawther, Chair
Scott Pass, Vice Chair
Geoff Bustin, Treasurer
Luke Ferdinands, Director
Sharon Broatch, Director
Carolyn Crompton, Director
Donna Savage, Director
Lizi McLoughlin, Director
Ken Martin, Director
Shannon Ward, Director

Grants in Action

"It was so very reassuring to speak with a hospice therapist or doctor as they seemed to not only know how we were feeling, but allowed us the space and time to begin our grieving process."

- HOSPICE AND BEREAVEMENT SERVICES PARTICIPANT AT SEA TO SKY HOSPICE

AWARE's Zero Waste Heroes station and Staff member.



Whistler Museum's Discover Nature Team at Lost Lake Exhibition.

Get Involved

We welcome everyone to join our events, granting, programming and more. Simply sign up for our newsletter at whistlerfoundation.com for invites, stories, and updates.

If you have philanthropic goals, such as building a fund, reach out to us. We offer flexible option for fund development suited to the level of participation you wish to have in creating a positive impact in the community. We can help you identify a particular area of interest that supports a personal or family legacy.

whistlerfoundation.com

In 2001, Sk̓w̓x̓wú7mesh Úxwumixw (Squamish people) and Líl'wat7úl (Lil'wat people) signed a protocol agreement as a commitment to support the preservation and protection of Indigenous rights in their shared traditional lands. The two nations, who have occupied the lands and waters in and around the area known as Whistler since time immemorial, now share a space for storytelling at Squamish Lil'wat Cultural Centre.

If you have yet to learn about the unceded territories, history and languages of Squamish and Lil'wat people, we encourage you to visit and support Squamish Lil'wat Cultural Centre. More info can be found at slcc.ca.

PO Box 1184, Whistler, BC V0N 1B0
info@whistlerfoundation.com

Registered Charity No. 871748943 RR0001

whistlerfoundation.com



Whistler
Community
Foundation