



Whistler
Community
Foundation



26
GRANTEE
ORGANIZATIONS
SUPPORTED

80
GRANTS &
SCHOLARSHIPS

\$546,960
GRANTED



ANNUAL REPORT

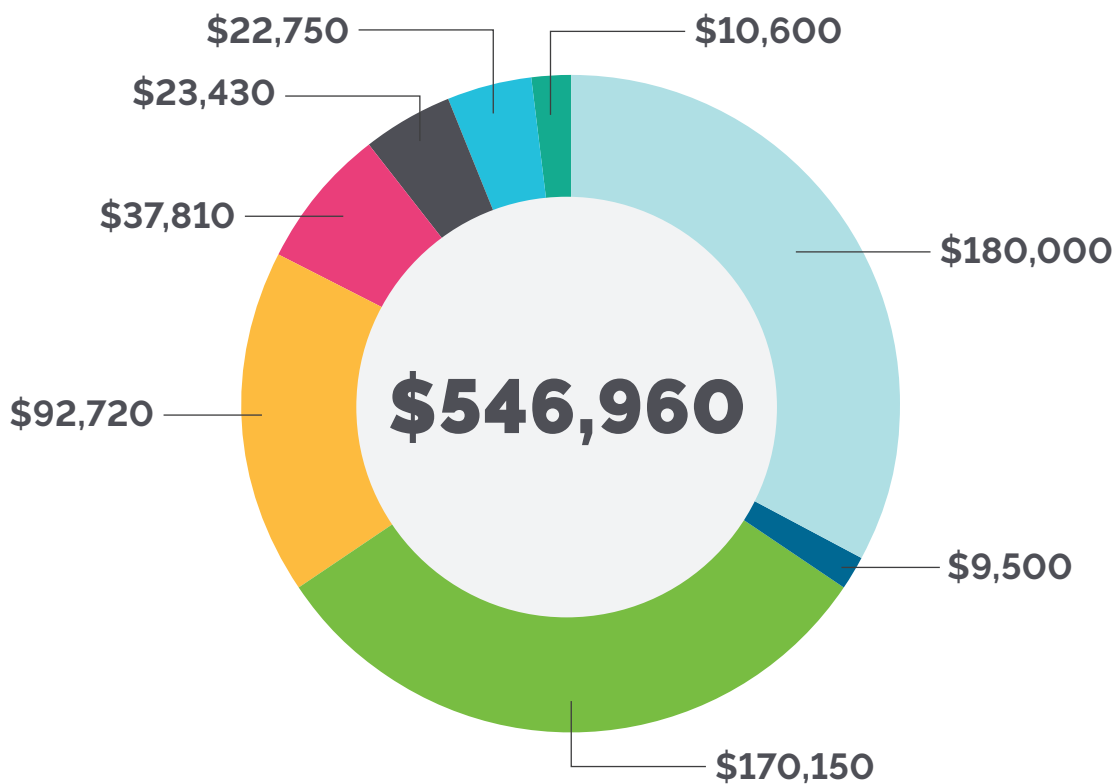
2024

Investing in a Thriving Community

Whistler Community Foundation grants on the unceded, ancestral, and traditional lands of Lil'wat7úl (Lil'wat Nation), N'Quatqua First Nation, and Skwxwú7mesh Úxwumixw (Squamish Nation).

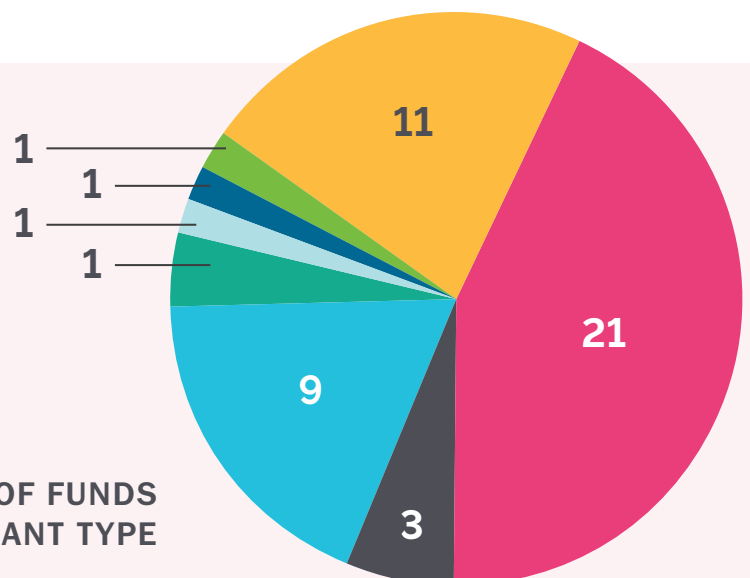
We wish to recognize the labour, of Indigenous peoples in the region, as they return to self-determination, revitalize languages, and reclaim ancestral lands and land practices they were unjustly denied. Through our practices we will seek cooperative granting relationships that support their pursuit of developmental priorities defined within their nations.

AMOUNTS GRANTED BY GRANT TYPE



Legend

- Prosperity Fund
- Neighbourhood Small Grants
- Environmental Legacy Fund
- Charity Funds
- Caring Community Funds
- Donor Advised Funds
- Scholarship Funds
- Leadership Funds



NUMBER OF FUNDS BY GRANT TYPE

Message from our CEO

In 2024, Whistler Community Foundation celebrated a major milestone—25 years of extraordinary moments, fueled by generosity and passion of a community united in the causes we care about most. And at the heart of it all, we found people who care deeply and show up, time and time again. For that, we are grateful.

Our AGM celebration marked the retirement of an important guide and mentor to staff and board. Sue Lawther, a skilled board chair, worked with the team to adopt initiatives led by the Community Foundations of Canada and other national philanthropic charities, like the Canadian Philanthropy Commitment on Climate Change. This commitment embedded the United Nations Declaration on the Rights of Indigenous Peoples, the 94 Calls to Action in the Truth and Reconciliation Commission, which moved WCF toward Trust-based Philanthropy into our investment and granting work.

From that AGM onward, Luke Ferdinands, with thoughtfulness and care, stepped up to be the lead navigator.

"Undertaking the role of board chair is a humbling and incredible privilege. I look forward to building on the enthusiasm and dedication of previous WCF boards, and acting as a catalyst for positive, equitable change."

- LUKE

In 2024, we also welcomed:

3 NEW MEMBERS to our board with Jen Glavas, James Griffiths, and Dan Howe, adding skills in HR, finance, and marketing, respectively.

2 NEW ENDOWED FUNDS with the Wayne Flebbe Arts Fund supporting arts organizations and the Don MacLaurin Memorial Rotary Club of Whistler & Cheakamus Community Forest Scholarship Fund supporting graduating high school students.

1 PARTNERSHIP TO DISTRIBUTE \$180,000 through the Government of BC's Prosperity Fund that sought to advance social inclusion and poverty reduction from Whistler to N'Quatqua.

We were excited to reach:

\$5.1+ MILLION AWARDED in grants and scholarships since 1999.

47 FUNDS with 15 funds added since our 20th anniversary.

All of this growth and celebration is just a small part of building a livable, just, and sustainable community where people and the planet thrive. In the years toward our next milestone of 30 years, we commit to exploring innovative practices in impact investing, best practices in granting, and growing even stronger relationships across communities.

Let's keep investing in a thriving community, together!



Claire Mozes, CEO

2024 Community Initiatives

Whistler's Vital Signs

Whistler's Vital Signs uses local knowledge to measure the vitality of our community and support action. Local data gathered through the program is used to support evidence-based, locally relevant solutions to improve the quality of life at the community level.



Vital Conversations participants connect with interactive displays before sitting down for "round table" discussions.

Vital Conversations key objectives:



RAISING

collective consciousness about the issues Whistler's community members experience.



BUILDING

relationships across differences by learning, experiencing, and enjoying being in community.



STRENGTHENING

individual and collective capacities and abilities to support and promote social justice.

In 2024, our Vital Signs committee hosted the third in a series of Vital Conversations. The goal with Vital Conversations is to create dialogue. So, we asked the audience, "Do we have a sustainable future?" and a number of other questions that prompted discussions around data from our 2023 Vital Signs report and the United Nations Sustainable Development Goals. We found that attendees were highly engaged in the content and keen to grow their understanding of our community, considered their impact on others, grew from feedback, and acknowledged that others at their tables showed up because they care.

Whistler's Living Wage

For the first time, Living Wage BC and Canadian Centre for Policy Alternatives – BC Office calculated Whistler's Living Wage at \$28.09 for 2024. The most recent calculation, conducted in 2019, was \$25.73.



Monthly living expenses for a Whistler family in 2024

Food	\$1,359
Clothing/Footwear	\$168
Housing	\$3,056
Phone/Internet	\$151
Transport	\$526
Other Expenses	\$1,151
Childcare	\$814
Non-MSP Health Costs	\$231
Contingency Fund	\$328
Parental Education	\$132
Total	\$7,915



Citizen of the Year

"It's an honor to be recognized with this award. I've really loved working with everyone at Whistler 360 Health, and that makes volunteering easy."

- CAROL LEACY

The Whistler Citizen of the Year Award keeps outstanding community builders front of mind. Whistler Community Foundation is honoured to be a host of the Citizen of the Year selection committee. Three nominees were selected as finalists for the 2024 Citizen of the Year: Carol Leacy, Ashlie Girvan, and Charalyn Kriz.

"Carol has dedicated herself to the work of Whistler 360 Health Care Collaborative, ensuring that the non-profit society, upon gaining charitable status, provided access to doctors for all residents seeking medical care. Her commitment to volunteering in a leadership role without compensation allowed fundraising dollars to be allocated to other vital areas of the organization, ensuring both its financial stability and, most importantly, the health of the community and access to essential medical care."

- JACKIE DICKINSON

Non-Profit Network

At the Non-Profit Network, we look to support one another through idea generation, shared resources, and communication tools, like the non-profit newsletter. When working with a network of national level charities at Community Foundations of Canada, WCF staff are given the opportunity to see that Whistler, Pemberton, and Mount Currie are unique communities with an enormous fondness for grassroots organizing. Staff and volunteers in the network are strong with motivation and heart for the people and places they serve. That's something we admire about the non-profit network.



"The Non-Profit Network is essential for Whistler's non-profit and charitable sector to connect, share ideas, and grow our community's resiliency. Operating in the spirit of camaraderie, everyone benefits. I am grateful that the Whistler Foundation has maintained this network for all of our benefits."

- MANDY ROUSSEAU, WHISTLER INSTITUTE

2024 Grant Stories



Whistler Community Services Society
Outreach Worker listens.

Caring Community



When you see the data in the 2023 Whistler's Vital Signs report, one might think well-being in Whistler is precarious. And it is. That's why we look to use the Caring Community stream to fund programming that supports well-being from Arts Whistler's Art on the Lake to Sea to Sky Hospice Society's Bereavement Support. Although, if there was one Caring Community grant that stands out as having an immediate and longterm impact, it might be Whistler Community Services Society's (WCSS) Clinical Counselling Assistance grant.

Folks typically access outreach services first as that team is highly-trained to support people as they face financial insecurity, advocacy needs, physical health concerns or injury, housing, food insecurity, substance use, employment concerns, and relationships. Occasionally, outreach support in these areas is not enough to help folks make the changes needed to get back on track to well-being and a referral to the Counselling Assistance Program is made.

2024 CARING COMMUNITY

Bereavement Support Program

Sea to Sky Hospice Society \$3,484

Counselling Assistance

Whistler Community Services Society \$6,516

Authors in Schools

The Whistler Writing Society \$2,000

Interpersonal Communication and Working with Families Training

Whistler Children's Center Society \$1,600

Girls on Wheels

Pemberton Off Road Cycling Association
(Village of Pemberton) \$1,500

Worksite Safety for Trail Crew

Pemberton Valley Trails Association \$3,500

2024 Strategic Foundation Project

Whistler Independent Supported
Housing Society \$3,000

Artist Sessions

The Point Artist-Run Centre (Arts Whistler) \$2,200

Children and Youth Art Program

The Point Artist-Run Centre (Arts Whistler) \$2,000

Art on the Lake

Arts Whistler \$2,350

Whistler Wellness Collaborative

Whistler 360 Health Collaborative \$2,200

Adaptive Bike for Youth

Whistler Adaptive Sports Program \$2,640

Discover Nature

Whistler Museum & Archives Society \$2,200

Mama Baby Connections

PearlSpace \$3,600

"This multi-year funding has been both vital and deeply appreciated, especially as the program experienced a 90% increase in demand from 2023 to 2024.

The Counselling Assistance Program provides low-cost mental health counselling to individuals with financial constraints who do not have access to extended health benefits. With over 20 practitioners available, clients can access in-person, virtual, or specialized care tailored to their needs. This ensures that those reaching out for help receive timely, appropriate, and affordable clinical support close to home.

Thanks to this funding, financial barriers and long wait times are reduced or eliminated, making mental health care accessible to those who need it most. Additionally, multi-year funding from the Whistler Community Foundation enables WCSS to build a more sustainable model, offering long-term security and support to our community.

WCSS extends our deepest gratitude to the Whistler Community Foundation, and in particular, the Caring Community Grant Committee, for their generous funding in support of the Counselling Assistance Program."

- JACKIE DICKINSON

2024 DONOR ADVISED GRANTS

Funding for Equipment

AWARE \$2,000

Food Bank Support

Whistler Community Services
Society \$5,000

Work 2 Live Program

Zero Ceiling \$3,120

Operational Support

Zero Ceiling \$6,630

\$5.1M+
GRANTED BETWEEN
1999 AND 2024



Environment

By Teacher Jane Millen who enthusiastically runs the Healthy Eating, Healthy Pastimes School Garden Program at Myrtle Philip Community School under the Nature and Science Education Program.

This spring, we are just starting in the garden. We are looking for what is sprouting. I forgot where we planted the garlic so that is funny for the kids, and we are waiting to see where it sprouts. Students are building more and better trellises for bush beans, as well as making better row markers so we don't lose track of where things are planted. Some students tested the pH last week and next we will plan out where to plant each vegetable based on what pH various plants do best in. We will also supplement with compost from Sea to Sky soils.

Today I met with the parent garden committee, and we have new members. Tasks for parents this spring include fixing a garden bed that was damaged by the snowplow, building a shelf in our shed, re-installing the irrigation in the herb box.

I made a schedule for when to start seeds inside. Students are making pots out of newspaper with a cool wooden form for starting seeds. This year I hope to have the starts ready at the right time to plant them out. Last year we started a beautiful cucumber, but I forgot to "harden it off" and when we transplanted it, it died that night from cold! :(So this year, we have plans to do better!

We also plan to harvest our worm bin for nutrient rich soil to fertilize with.

We hope to harvest radishes, kale, and arugula in late June just before the end of school. These will be eaten and enjoyed straight out of the garden. Last year one Kindergarten class and I had an end of school celebration. We invited all the parents and then the students showed their parents all around the garden, we sang some garden songs, and then we ate some radishes together. I plan to do that this June with more classes so parents can see what we're doing.

2024 ENVIRONMENTAL LEGACY FUND GRANTS

Healthy Eating, Healthy Pastimes School Garden Program

Myrtle Philip Community School Nature
and Science Education Program \$4,200

Whistler BioBlitz

Whistler Naturalists (AWARE) \$16,500

Core Operations

Stewardship Pemberton Society \$20,000

Core Capacity and Organizational Development

AWARE \$50,000

Glacier Monitoring

Whistler Naturalists (AWARE) \$5,000

Fungus Among Us

Whistler Naturalists (AWARE) \$6,100

Invasive Animals Monitoring, Mapping and Program Development

Sea to Sky Invasive Species Council \$23,000

Bird Studies

Whistler Naturalists (AWARE) \$2,200

Invasive Plants Inventory, Control and Monitoring

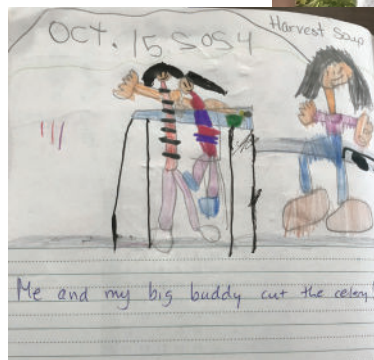
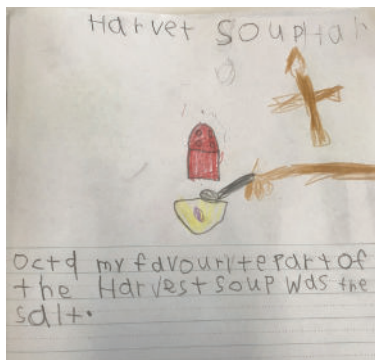
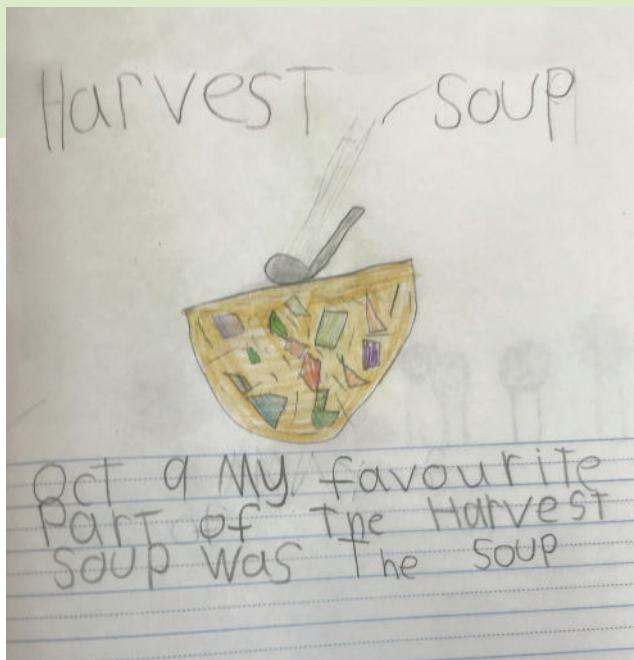
Sea to Sky Invasive Species Council \$12,500

Sustainable Trail Building Workshop

Pemberton Off Road Cycling
Association (PVRTA) \$10,150

Invasive Species Education and Outreach

Sea to Sky Invasives Species Council \$20,500



Students at Myrtle Phillip Community School express joy while harvesting fresh vegetables. Images submitted by Jane Millen.



Leadership

It's obvious that Martha Oliver is wholeheartedly dedicated to improving the lives of the animals in WAG's care. She speaks about best outcomes, quality of life, and finding successful and enduring human matches. So, it's not surprising to learn that she's moved up at WAG from volunteer to staff and now fills the crucial role of Adoptions Coordinator.

In 2024, Martha applied for the Kathy Barnett Leadership Grant to attend The Karen Pryor Academy Dog Trainer Professional Qualification and Humane Canada's Summit for Animals. The training took the form of online workshops which involved various assignment types including video submissions of Martha working with animals. Over several months, Martha trained Ellie, a WAG Alumni, Rocky, Luna, and the famous Lola (dogs), plus Oliver and Rex (cats).

Much of the training included behaviour observation and clicker training. Through this process, Oliver was introduced to an object, in this case a skateboard, and the cat then learned to become comfortable enough to lie down on it. Martha emphasized training isn't about luring animals into an activity and is more about building the animal's confidence and re-enforcing behaviours. This type of training can be critical for some animals who need extra care in building relationships with humans.

Martha also broadened her knowledge of how to collaborate with community partners to support animal wellbeing through the Humane Canada's Summit for Animals. Across Canada organizations are faced with similar challenges, and the summit attendees validated WAG's amazing work and support for new or expanding programming. Martha suggested that learning how to shift her mindset from outreach to inreach was important in providing inclusive programming and bringing more partners into the fold. WAG looks forward to integrating the learnings from this grant into their strategic planning and collaborative programming.



2024 LEADERSHIP GRANTS

Mountain Bike Symposium

Pemberton Off Road Cycling
Association (PVTa) \$520

Grant Writing Education

Whistler Independent Supportive
Housing Society \$500

Non-profit Management SFU Certificate

Arts Whistler \$895

Leadership Development and Foundations of Fundraising

Sea to Sky Hospice Society \$1,800

Dog Trainer Professional Certification & Humane Society Summit

Whistler Animals Galore (WAG) \$2,500

Non-profit Management SFU Certificate

Whistler Animals Galore (WAG) \$2,500

Canadian Association of Literary Festivals Conference

The Whistler Writing Society \$1,885

Charity Funds 2024 Annual Disbursements

Arts & Culture Legacy Fund \$16,520

AWARE Environmental Fund \$530

Literary Arts Legacy Fund \$900

Marlene Siemens Callanish Society
Endowment Fund \$620

Sea to Sky Hospice Society Fund \$1,600

Whistler Adaptive Sports Endowment \$4,420

Whistler Animals Galore Fund \$400

Whistler Film Festival Society Fund \$1,440

Whistler Museum and Archives
Society Fund \$880

Whistler Public Library Fund \$370

Whistler Search and Rescue Fund \$62,040

Zero Ceiling Society Fund \$480



Scholarships & Bursaries

Chili Thom Memorial Scholarship \$500

Jojo Ng Howe Sound Secondary School
Ezrai Phillips Whistler Secondary School
Emily Noort Pemberton Secondary School
Marshall James Xetólacw

Doug & Mary Forseth Scholarship \$750

Amelia Richards Pemberton Secondary School
Jennibelle Lin Howe Sound Secondary School
Thandi Karanjot Howe Sound Secondary School

Grad Legacy Scholarship \$800

Shahd Kizawi Howe Sound Secondary School

Kelty & Riley Dennehy Scholarship \$2,000

Emilie Desbiens Whistler Secondary School
Lyla Hirsh Whistler Secondary School
Tyler Sopp Whistler Secondary School

Sarah McSeveney Scholarship \$950

Isabella Mounzer Howe Sound Secondary School

Walter Zebrowski Memorial Rotary Scholarship \$2,000

Sophia Cross Whistler Secondary School
Soren Weetman Whistler Secondary School

Wendy Thompson Bursary \$500

Fern Minton Whistler Secondary School
Nathan Nickerson Pemberton Secondary School
Liv Teitzel Pemberton Secondary School
Dorian Molnar Pemberton Secondary School
Ali Agha Ghulami Pemberton Secondary School
River Kelly Howe Sound Secondary School

Wendy Thompson Scholarship \$1,000

Bella Askew Howe Sound Secondary School
Maika Shishido Pemberton Secondary School
Charlie Bradley Whistler Secondary School
Tyler Craig Whistler Secondary School
Kianna Holding-Heisterman
Howe Sound Secondary School
Jojo Ng Howe Sound Secondary School

Whistler Scholarship \$500

Sean Felius Whistler Secondary School
Tia Horn Whistler Secondary School
Ben Unruh Whistler Secondary School
Soren Weetman Whistler Secondary School
Samarra Wrightson Whistler Secondary School
Ossian Dalglish Whistler Secondary School
Emilie Desbiens Whistler Secondary School
Madeleine Pardoe Whistler Secondary School
Ben Fish Whistler Secondary School

Wendy Thompson Hut at night.
(Image submitted by 2021 Awardee of the Wendy Thompson Scholarship Mackenzie Williams)



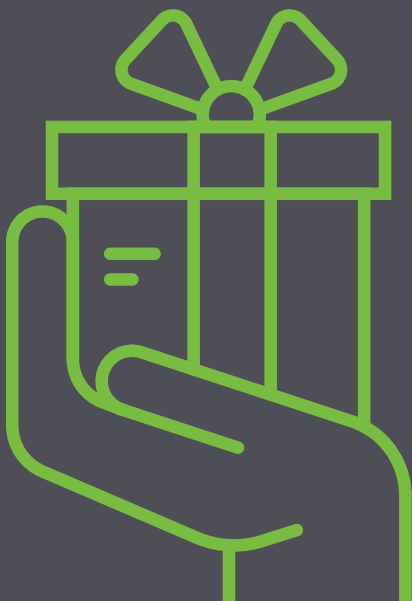


Jennibelle Lin (right) and Karanjot Thandi (left) receive Doug & Mary Forseth Scholarships from Claire Mozes (middle), WCF CEO at Howe Sound Secondary's award ceremony.

"I am writing to extend my sincerest thank you for selecting me as the recipient of the Chili Thom Memorial Scholarship. This means a lot to me, as I have admired Chili's work for many years. I am even lucky enough to have two of Chili's artworks in my home. Every day, I look up to his painting, 'The Dawn of Hope,' which hangs proudly on my family's wall. His work not only inspires me to make great art but also to get out and see the world—live life to the fullest. Even though I never knew him personally, I've heard Chili was as lively as his paintings. I want to thank you all for creating this fund in Chili's name, as I believe it will help aspiring artists like myself for years to come."

JOJO NG, PHOTOGRAPHER

Your Gifts Grow **Here**



Whistler is a place of passion. It's grassroots organizing. And that's just a small part of why we encourage you to invest right here in your community. At a community foundation, we nurture your donation or fund, through careful investments.



You can donate to an existing fund, like a community fund that offers flexible granting opportunities or you can start your own fund and grant to a cause that you care about most—the choice is yours at

whistlerfoundation.com/give

2024 Partnership Grants

Community Prosperity Fund



COMMUNITY
PROSPERITY FUND



In 2024, Whistler Community Foundation, alongside other community foundations across B.C., granted from the Community Prosperity Fund (CPF). A \$25 million investment in poverty reduction and social inclusion was made across the province with \$180,000 being invested locally.

The Lilwat and N'Quatqua Outreach, Training, and Support grant of \$33,000 was awarded to Sea to Sky Invasive Species Council (SSISC) in Whistler Community Foundation's catchment that reached from Whistler to N'Quatqua and D'Arcy.

The SSISC's grant application truly answered the call to invest in poverty reduction and social inclusion. Their team will be collaborating with Lilwat Nation and N'Quatqua Nation to inventory, map, and treat high priority invasives.

Indigenous peoples are impacted by invasive plant and aquatic species brought by settlers to their delicate ecosystems. Invasives pose ongoing threat to cultural protocols and food harvests, so managing invasives species is an act of reconciliation for the harms of colonialism and systemic oppression.

The collaboration intends to adopt two-eyed seeing, meaning they will place importance on both the lens of Indigenous peoples, cultures, histories, and contexts, as well as through the lens of Western knowledge systems which are often defined by disciplines, exact measurements, and prescribed methodologies.

2024 PARTNERSHIP GRANTS

GROW Whistler

AWARE \$50,000

Stqaka7stúmc Lílwat Transition House

Lílwat Nation \$45,000

Organizational Capacity Building

Whistler Multicultural Society \$35,350

Lílwat and N'Quatqua Outreach, Training, and Support

Sea to Sky Invasive Species Council
(SSISC) \$33,000

Food Bank

Whistler Community Services Society \$16,650



Neighbourhood Small Grants

19
PROJECTS

\$9500
GRANTED



Neighbourhood Small Grants

Nicole Baudisch is keen on building community around celebration. She lives in one of the new buildings in Cheakamus and saw the small grant as a way to bring kids (and parents) from the longer standing neighbourhood Trick or Treat route to a new destination. Neighbours in the building rallied and used the grant to purchase candy, light refreshments for the Halloween hosts, and decorations that the team will use year after year. It was pretty festive – and a little frightening.

Neighbourhood Small Grants help residents of any age, experience, or background take part in community building. We encourage ideas that connect people with a common goal or interest that leads to skill sharing, resource sharing, celebrations and more.



Do you have an idea that connects neighbours? Apply for a Neighbourhood Small Grant from \$50 to \$500. Awards are ongoing until the funds are gone or September 30, 2025 (whichever comes sooner).



Financial Statements

The following excerpt is from our annual financial statements. Please see our website for the complete financial statements.

STATEMENT OF FINANCIAL POSITION

For the year ended December 31, 2024

	Endowment Funds	Restricted & Flow-through Funds	Unrestricted Funds	Investment in Capital Assets	2024	2023
Assets						
Cash	\$435,284	-	\$117,887	-	\$553,171	\$316,818
Accounts Receivable	-	-	\$3,420	-	\$3,420	\$783
Prepaid expenses	-	-	\$14,249	-	\$14,249	\$12,401
Investments	\$7,804,585	\$167,891	-	-	\$7,972,476	\$7,073,302
	\$8,239,869	\$167,891	\$135,556	-	\$8,543,316	\$7,403,304
Capital Assets	-	-	-	\$394	\$394	\$874
	\$8,239,869	\$167,891	\$135,556	\$394	\$8,543,710	\$7,404,178
Managed trust funds					\$316,109	\$287,516
Liabilities and Net Assets						
Accounts payable & accrued liabilities	-	-	\$16,339	-	\$16,339	\$14,629
Net Assets	\$8,239,869	\$167,891	\$119,217	\$394	\$8,527,371	\$7,389,549
	\$8,239,869	\$167,891	\$135,556	\$394	\$8,543,710	\$7,404,178
Managed trust funds					\$316,109	\$287,516

STATEMENT OF OPERATIONS

For the year ended December 31, 2024

	2024	2023
Revenue		
Donations	\$432,151	\$207,837
Fundraising	\$187,072	\$8,539
Partnership donations	\$189,750	\$116,668
Interest and dividends	\$209,543	\$201,283
Realized gains on investments	\$230,179	\$1,282,198
Unrealized (losses) gains on investments	\$733,664	(\$693,026)
Administration fee	\$6,890	\$5,396
	\$1,989,249	\$1,128,895
Expenses		
Amortization	\$480	\$331
Grants	\$356,210	\$184,823
Partnership grants	\$189,750	\$115,043
Administration	\$222,616	\$203,517
Fundraising administration	\$82,371	\$1,177
	\$851,427	\$504,891
Excess of revenues over expenses for the year	\$1,137,822	\$624,004

Our Funds

Each dollar that a community builder gives to the Whistler Community Foundation goes directly to a fund. The proceeds from investments in the funds below are distributed annually through our community granting program, donor advisory, or simple charity disbursements.

Caring Community

Ackhurst Family Rotary Club of Whistler Fund
American Friends of Whistler Fund
Community Fund
Emergency Fund
Jill Ackhurst Social Action Fund
Moving Mountains for Children Fund
Pemberton Community Fund
Pemberton Community Endowment Fund

NEW Wayne Flebbe Arts Fund

Whistler and Pemberton Big Brothers and Sisters Fund
Whistler Blackcomb Foundation Fund
Whistler Youth Foundation Fund

Environment

Environmental Legacy Fund

Leadership

Bob and Sue Adams Leadership Fund
Kathy Barnett Memorial Leadership Fund

Scholarships & Bursaries

Chili Thom Memorial Scholarship Fund

NEW Don MacLaurin Memorial Rotary Club of Whistler and Cheakamus Community Forest Scholarship Fund

Doug and Mary Forseth Scholarship Fund
Grad Legacy Scholarship Fund
Kelty and Riley Dennehy Scholarship Fund
Sarah McSeveney Scholarship Fund
Walter Zebrowski Memorial Rotary Scholarship Fund
Wendy Thompson Scholarship and Bursary Fund
Whistler Scholarship Society Fund

Donor-Advised Funds

Deborah Smythe & Family Fund
Lennox McNeely & Mei Liu Fund
Terry and Barb Deutscher Fund

Charity Funds

Arts & Culture Legacy Fund
AWARE Environmental Fund
Literary Arts Legacy Fund
Marlene Siemens Callanish Society Endowment Fund
Sea to Sky Hospice Society Fund
Whistler Adaptive Sports Endowment Fund
Whistler Animals Galore Fund
Whistler Film Festival Society Fund
Whistler Museum and Archives Society Fund
Whistler Public Library Fund
Whistler Search and Rescue Fund
Zero Ceiling Society Fund

Other Funds

Enviro Fund
J. Duncan Fund
R. Brown Fund
R. Heine Fund
WCF Operating Endowment Fund
Whistler Museum Building Fund
Whistler Skiers Chapel Fund
Zero Ceiling Society Operating Reserve

\$808,973
**TOTAL DONATIONS
RECEIVED IN 2024**

Thank You

We want to thank everyone for their contributions to our 25th Anniversary year. It was an honour to spend time with you, reflecting on all the moments that we've showed up to support community, together.

SUPPORTERS AND PARTNERS



STANDING VOLUNTEER COMMITTEES

Thank you to the many volunteers of the Standing Committees, whose contributions of local knowledge and expertise strengthen the Whistler Community Foundation's work. Please reach out if you are interested in joining any of our committees.

Citizen of the Year Selection	Scholarships & Bursaries
Environmental Legacy Grants	Whistler Community Grants - Youth, Social Care and Leadership
Emergency Fund Advisory	
Governance	Vital Signs
Finance and Investment	Neighbourhood Small Grants
Pemberton Community Grants	

WCF TEAM

Carolyn Crompton, Director
Claire Mozes, CEO
Dan Howe, Director
Geoff Bustin, Treasurer
James Griffiths, Director
Jen Glavas, Director
Ken Martin, Director
Lisa Severn, Communications
Lizi McLoughlin, Director
Luke Ferdinands, Chair
Natalie Doiron, Grants and Funds Assistant
Nicole Baudisch, Director
Shannon Ward, Vice Chair
Shauna Hardy, Director
Sue Lawther, Past Chair
Valerie Vermette, Bookkeeper

What's Next

"Challenges and opportunities are different from what they were 25 years ago and from what they will be 25 years from now, or any of the years in between. While the future is unwritten, we commit our team of volunteers and staff to our purpose and values. Our focus for the year ahead is to remain ready and responsive and deliver funding that meets the needs of the charities that we serve."

LUKE FERDINANDS, CHAIR

Our Shared Purpose

Use knowledge to build a resilient and sustainable community for all citizens now and into the future.

Our Values & How We Work

INTEGRITY

to act ethically in all relationships

LEADERSHIP

to use our unique community knowledge to be a catalyst
to build a better tomorrow

COLLABORATION

to leverage resources of diverse partners and work
together to maximize our community impact

INCLUSIVITY

to foster belonging and honor the dignity and worth of all
with just and transparent practices

ACCOUNTABILITY

to be the trustworthy resource for philanthropists, grant
recipients and community members



For more stories, sign up
to our newsletter direct by
scanning the QR code or visit
whistlerfoundation.com

Take part in what we're doing

We invite you to join as an active participant in community building. Sign up for our newsletter to get updates on all the exciting things we have planned before our next annual report.

May to September Apply for a Neighbourhood Small Grant

November Raise money at the 2nd Annual Glow Gala & make a bid at the silent auction

December Shop Local to Give Local at this 5th Annual event on the first Saturday in December

Spring 2026 Promote our granting opportunities with local charities

Spring 2026 Try an introductory seminar on Estate Planning



Whistler Community Foundation
PO Box 1184, Whistler, BC V0N 1B0
info@whistlerfoundation.com

Registered Charity No. 871748943 RR0001

whistlerfoundation.com

